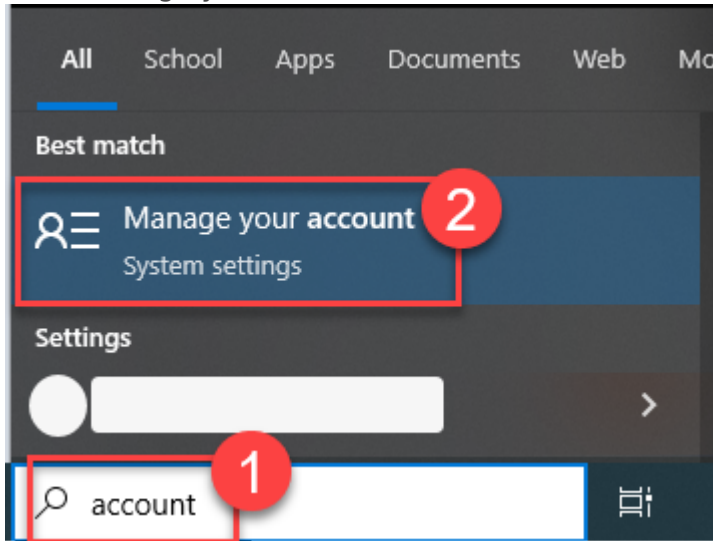
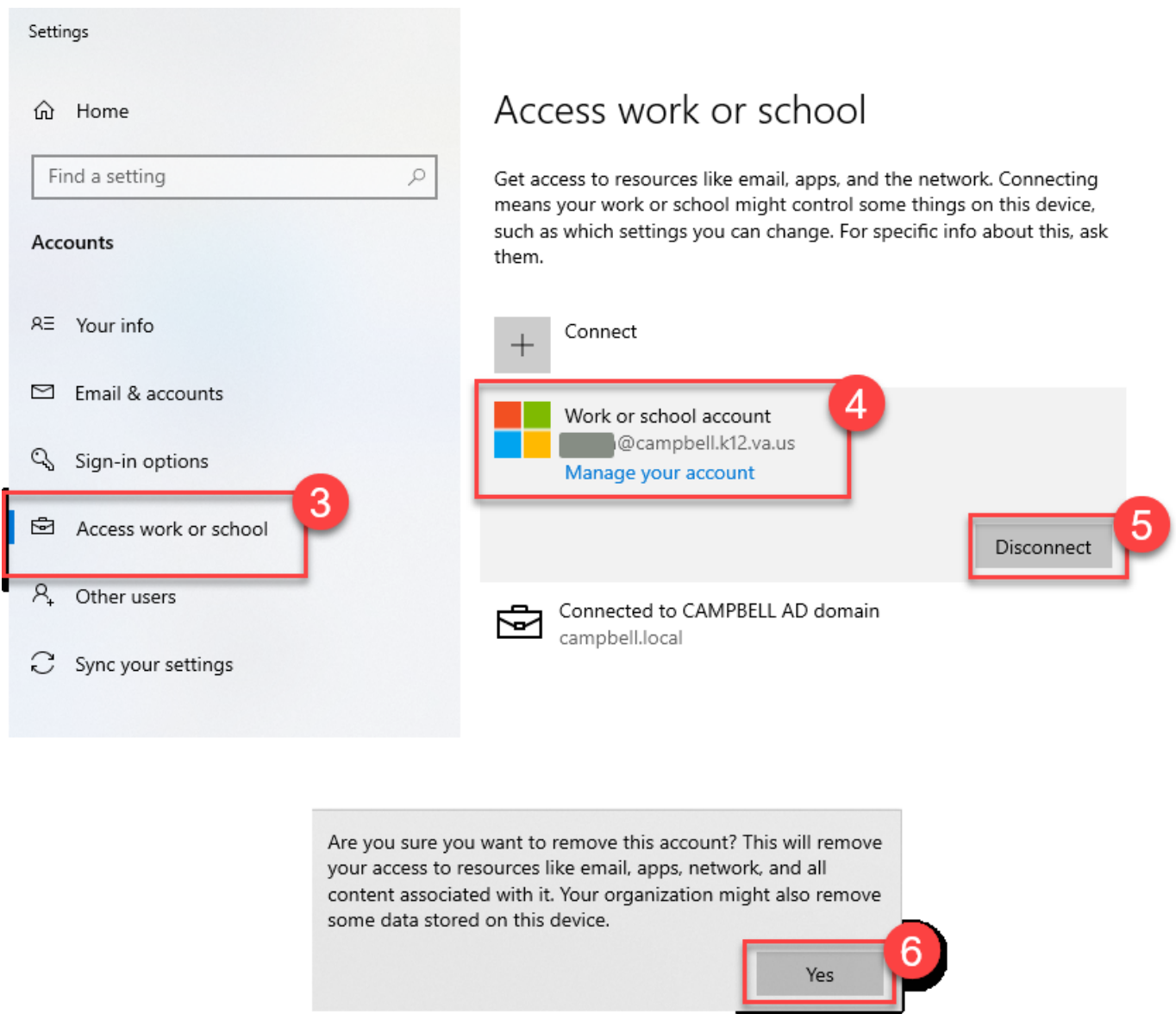


How to Reconnect Your Microsoft Account to Your CCPS Device

1. In the search bar on the bottom left of your taskbar, type “account”
2. Click Manage your account



3. On the left-hand side, click Access work or school
4. Click on your CCPS work account
5. Click Disconnect
6. In the pop-up window, click Yes



- Click Connect and follow the on-screen instructions to log back in using your CCPS credentials. Your CCPS Microsoft work or school account should now be connected.

Revision #1

Created 20 February 2025 18:52:14 by Clint Hunter

Updated 16 June 2025 19:17:09 by Clint Hunter

This information is for the staff, students, and parents/guardians at Campbell County Public Schools. Do not share this information with anyone not included in these groups.

You can view more help articles at kb.campbell.k12.va.us.