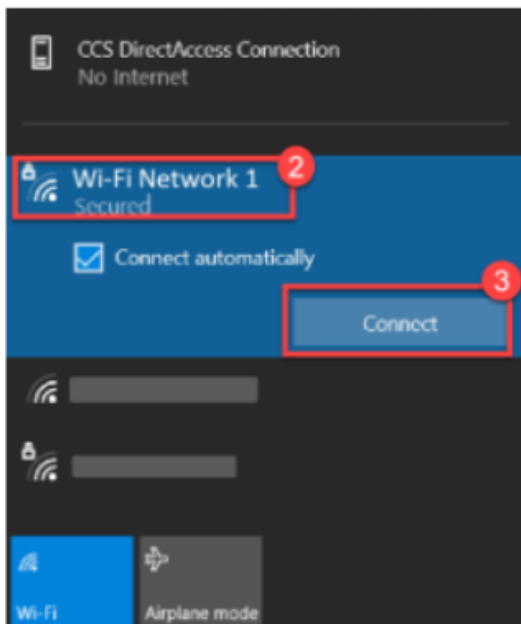
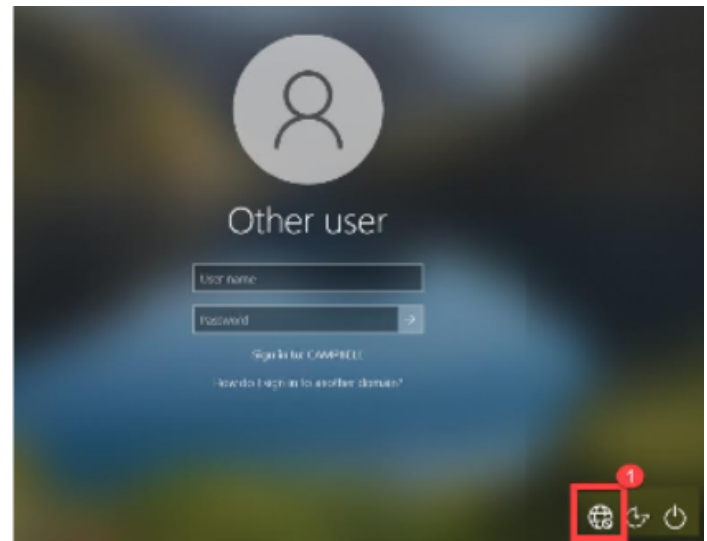


## **CCPS IT Knowledge Base**

# How to connect your CCPS laptop to your home Wi-Fi

**Follow the directions below to connect your student laptop to a wireless network. The step number corresponds to the number in the image.** \*Please note that this does not need to be done in a CCPS building as the laptop will connect automatically to the CCPS network.

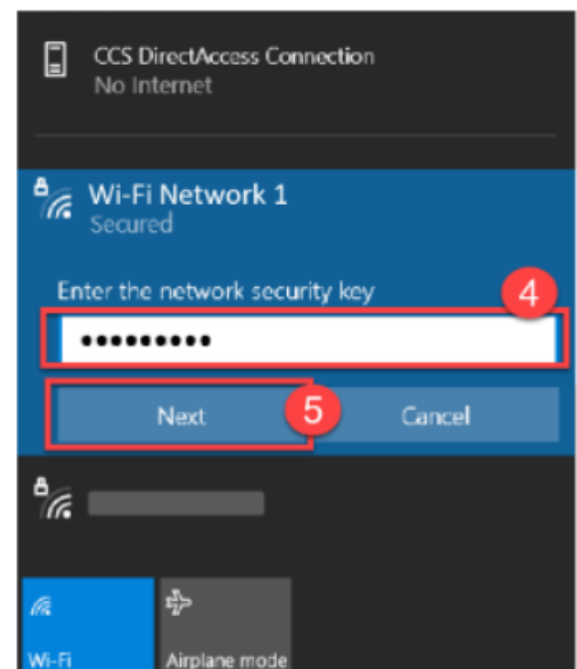
1. At the login screen, find the internet icon at the bottom right of the screen. Click it.





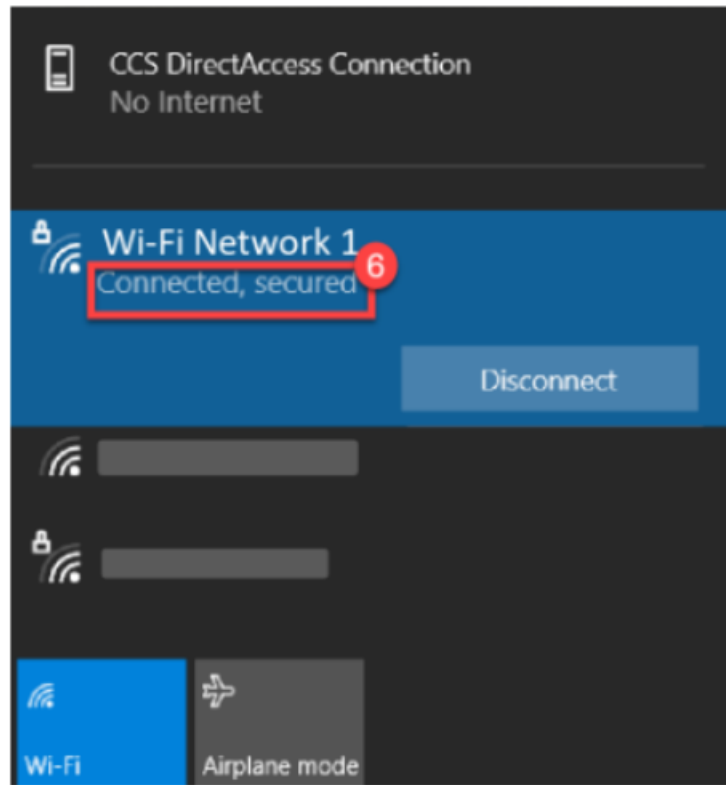
2. In the window that appears, find the wireless network you want to connect to and click it.

3. Click **Connect**.

4. Enter the network password.
5. Click **Next**.



6. You should now be connected to the wireless network.
7. The network icon on the bottom right of the login screen should change from  to  indicating that the laptop is connected.



---

Revision #5

Created 13 February 2025 16:34:30 by Clint Hunter

Updated 16 June 2025 19:22:23 by Clint Hunter

This information is for the staff, students, and parents/guardians at Campbell County Public Schools. Do not share this information with anyone not included in these groups.

You can view more help articles at [kb.campbell.k12.va.us](http://kb.campbell.k12.va.us).